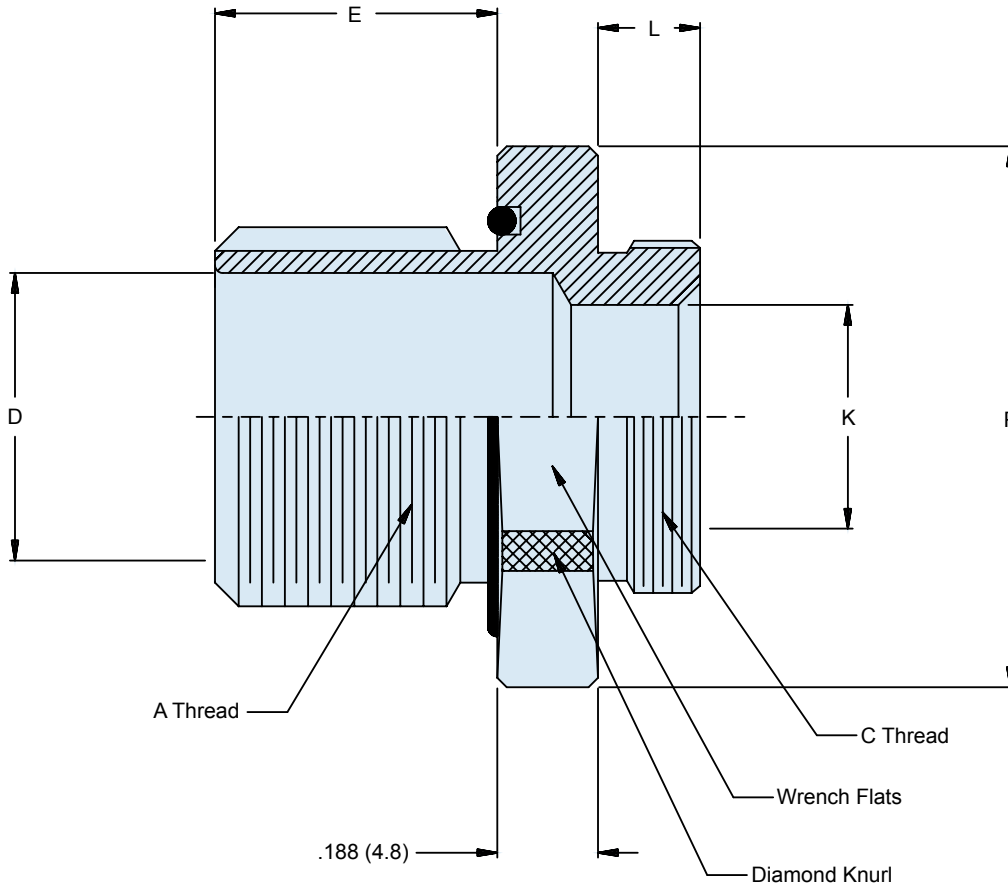


**M24758 - 31 C 16**

Basic No. \_\_\_\_\_  
 Conduit Size Code (Table I) \_\_\_\_\_  
 A Thread Code (Table II) \_\_\_\_\_



**APPLICATION NOTES**

- |   |   |
|---|---|
| <p>1. Assembly identified with manufacturer's code identification number (Glenair, part number and classification code 490).</p> <p>2. The M24758-31 adapter couples miscellaneous fittings to M24758-2, M24758-3 or M24758-4 fittings.</p> | <p>3. Material / Finish:<br/>                 Adapter - 316 SST/Electroless nickel, matte finish.<br/>                 O-Ring - Silicone rubber/NA</p> <p>4. Metric dimensions (mm) are indicated in parentheses.</p> |
|---|---|

**TABLE I: CONDUIT SIZE CODE**

CONDUIT SIZE CODE	C CLASS - 2A THREAD	L +.03 (0.8) -.00	K DIA MIN
A	.438-28 UNEF	.210 (5.25)	.245 (6.22)
B	.688-24 UNEF	.250 (6.35)	.495 (12.57)
C	.938-20 UNEF	.310 (7.87)	.745 (18.92)
D	1.250-18 UNEF	.370 (9.40)	.995 (25.27)
E	1.563-18 UNEF	.370 (9.40)	1.245 (31.62)
F	1.875-16 UN	.430 (10.92)	1.495 (37.97)
G	2.375-16 UN	.430 (10.92)	1.995 (50.67)
H	2.875-16 UN	.430 (10.92)	2.495 (63.37)
J	.563-24 UNEF	.250 (6.35)	.370 (9.40)
K	.813-20 UNEF	.310 (7.87)	.620 (15.75)
L	3.375-16 UN	.430 (10.92)	2.995 (76.07)

**TABLE II: A THREAD CODE**

A THREAD CODE	A PG THREAD	D DIA	H DIM	P DIM MAX	CONDUIT SIZE
07	PG 7-20	.315 (8.0)	.275 (7.0)	1.000 (25.4)	A, J
09	PG 9-18	.375 (9.5)	.275 (7.0)	1.130 (28.7)	B, J
11	PG 11-18	.520 (13.2)	.275 (7.0)	1.250 (31.8)	B, K
13	PG 13.5-18	.600 (15.2)	.275 (7.0)	1.250 (31.8)	B, K
16	PG 16-18	.670 (17.0)	.275 (7.0)	1.380 (35.1)	C, K
21	PG 21-16	.890 (22.6)			
29	PG 29-16	1.250 (31.8)			
36	PG 36-16	1.640 (41.7)			
42	PG 42-16	1.910 (48.5)			
48	PG 48-16	2.120 (53.8)			